

SINGULARITY[®]

micro pigment infusion



LEVEL	NATURAL HAIR COLOR	UNDERCOAT	NEUTRALISING TONE
10	Extra light blonde		Palest Yellow Violet 2
9	Very light blonde		Light Yellow Violet 2
8	Light blonde		Yellow Blue, Antiorange, .0 - .10, Violet .2
7	Medium blonde		Orangish Yellow Blue, Antiorange, .0 - .10
6	Dark blonde		Yellowish Orange Blue, Antiorange, Green, Antired, Ash 1, .0 - .10
5	Light brown		Orange Blue, Antiorange, Green, Antired, Ash 1, .0 - .10
4	Medium brown		Red Green, Antired, Ash 1
3	Dark brown		Red Green, Antired, Ash 1
1	Black		Dark Red

BLONDERATOR®



- VEGANLIFE
- PLEX FORMULA
- VEGETAL KERATIN



- VEGANLIFE
- PLEX FORMULA
- VEGETAL KERATIN



- VEGANLIFE
- PLEX FORMULA
- ORGANIC ARGAN OIL
- AMMONIA FREE
- FRAGRANCE FREE



- VEGANLIFE
- BLUESBERRY LEAF EXTRACT
- CAOLIN
- CRUELTY FREE



- VEGETAL KERATIN
- CAOLIN
- CRUELTY FREE

Made in Italy | Prodotto in Italia

PROFESSIONAL
IMPERITY
MILANO

SINGULARITY
micro pigment infusion

NATURAL

1.0

3.0

4.0

5.0

6.0

7.0

8.0

9.0

10.0



PROFESSIONAL
IMPERITY
MILANO

SINGULARITY
micro pigment infusion

INTENSE NATURAL

WARM
NATURAL

PROFESSIONAL
IMPERITY
MILANO

3.00

4.00

5.00

6.00

7.00

8.00

9.00

6.03

8.03

10.03



SINGULARITY
micro pigment infusion

NATURAL COLD

5.01



7.01



8.01



9.01



MATT

4.07



5.07



6.07



PROFESSIONAL
IMPERITY
MILANO

SINGULARITY
micro pigment infusion

ASH COLORS

1.10

5.1

6.1

7.1

8.1

9.1

10.1

6.11

7.11

9.11

PROFESSIONAL
IMPERITY
MILANO

8.12





BROWNS/WARM BEIGES

6.32

7.32

9.32

BROWNS/COLD BEIGES

6.13

7.13

8.13

9.13

10.13



GOLDENS

5.3

7.3

9.3

FASHION FOOD

4.35
Chocolate

6.35
Chocolate

7H
(7.8)
Hazelnut

7HC
(7.88)
Hazelnut

8T
(8.8)
Toffee

9MC
(9.8)
Milk Coffee

PROFESSIONAL
IMPERITY[®]
MILANO



SINGULARITY[®]
micro pigment infusion

SINGULARITY
micro pigment infusion

COPPERS

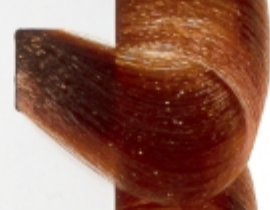
6.24



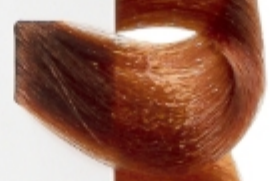
6.4



7.43



7.44



9.44



MAHOGANY

3.82



5.5



PROFESSIONAL
IMPERITY
MILANO

SINGULARITY
micro pigment infusion

REDS

5.62

6.62

7.62

6.66

7.66

8.66

5.666

6.666

7.620



PROFESSIONAL
IMPERITY
MILANO

SINGULARITY
micro pigment infusion

VIOLET/IRISE

4.20

5.22

7.222

PEARL ASH

7.21

8.21

9.21

10.21

11.21

12.21



SINGULARITY
micro pigment infusion

CORRECTORS

BLUE

RED

VIOLA

ORANGE

GREEN

ANTI-ORANGE

ANTI-RED

NEUTRO

10.00

PROFESSIONAL
IMPERITY
MILANO



SINGULARITY
micro pigment infusion

TONERS

9.22

9.02

10.02

11.00

11.10

11.11

11.02

METALIC

SMA
System Metallic
Aluminum

SMGG
System Metallic
Graphite Grey

SMLG
System Metallic
Lavender Grey



SINGULARITY
micro pigment infusion

SUPER LIGHTENERS

901

902

911

1200

1201

1221

PASTEL

SPC
System Pastel Candy

SPR
System Pastel Rosa

SPSB
System Pastel Sky Blue



SINGULARITY
micro pigment infusion

SPECIAL BLOND

10.01

10.12

12.0

12.10

12.11

12.12

12.2

12.26

PROFESSIONAL
IMPERITY
MILANO





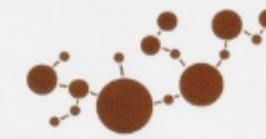
GREY

30%

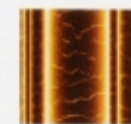
50%

80%

implex[®]



The structure of human hair after hair dyeing with and without Implex
Struttura dei capelli umani dopo la tintura con e senza Implex



YOUR HAIR WITH IMPLEX
I TUOI CAPELLI CON IMPLEX



YOUR HAIR WITHOUT IMPLEX
I TUOI CAPELLI SENZA IMPLEX



BOND REGENERATOR PHASE 1 | RIGENERATORE DEL LEGAME IMPLEX

⊕ 3,5 ml

+50 ml



⊕ 7 ml

+30 g



⊕ 3,5 ml

+ 20 ml



IMPLEX BOND AMPLIFIER PHASE 2 | POTENZIATORE DEL LEGAME IMPLEX

- ✓ **Stabilizes the disulphide bonds of hair** | Stabilizza i legami di disolfuro dei capelli
- ✓ **Closes the cuticles** | Chiude le cuticole
- ✓ **Rinse the hair** | Risciacquare bene i capelli
- **10-30 ml** ⌚ **10 min**
- **Gently massage** | Massaggiare delicatamente
- **Rinse and shampoo** | Risciacquare e procedere con lo shampoo



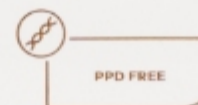
IMPLEX BOND SUSTAINER PHASE 3 | MANTENIMENTO DEL LEGAME IMPLEX

HOME TREATMENT | USO DOMESTICO

- ③ **For Normal/Thick hair** | Capelli normali e spessi
 - **10-30 ml** ⌚ **2-3 min**
- **For Thin hair** | Capelli sottili
 - **10-30 ml** ⌚ **2-3 min**



PETROLATUM
FREE



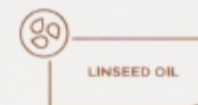
PPD FREE



SULFATE
FREE



CRUELTY FREE



LINSEED OIL

After Color Acid TECHNIQUE®



LONG LASTING COLOR | COLORE DURATURO
ANTI FADING PH-TECHNOLOGY | TECNOLOGIA-PH ANTI-SBIADIMENTO

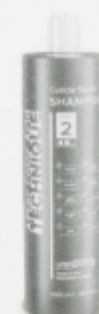


- ✓ **Color locked for longevity, protected from fading** | Colore brillante per lungo tempo, protetto dallo sbiadimento
- ✓ **Instantly smoother, softer, brillianter silky hair** | Capelli immediatamente più lisci, morbidi, setosi e lucenti
- ✓ **After-color-service with innovative acidic sealer pH-technology** | Servizio post-color con innovative tecnologia pH acido sigillante
- ✓ **Total recovery: results in replenished, rebalanced, soothed hair** | Miglioramento generale: capelli rigenerati, riequilibrati e leniti
- ✓ **High-end color perfecter acid system in 3 steps: cuticle sealer cream, shampoo, and anti-odor hair mask** | Sistema di perfezionamento del colore di alto livello olta in 3 passaggi: crema sigillante per cuticole, shampoo e maschera per capelli antiodore
- ✓ **Fabulous hair recovery: maximum color results for up to 6-8 weeks** | Favoloso miglioramento dei capelli: risultati di colore massimi fino a 6-8 settimane



1
CUTICLE SEALER CREAM
CREMA CHIUDI CUTICOLE
POST-TINTURA

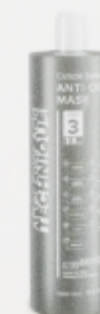
- **Rinse the hair with pure water, leave on for 3-5 minutes** | Risciacquare i capelli con acqua pura, lasciare in posa 5 minuti
- **Gentle massage the Cuticle Sealer Cream into hair evenly** | Massaggiare delicatamente la crema sigillante per cuticole sui capelli in modo uniforme
- **Rinse and apply Cuticle Sealer Shampoo** | Sciacquare e applicare lo shampoo sigillante per cuticole



2
CUTICLE SEALER SHAMPOO
SHAMPOO pH 4.5 CHIUDI
CUTICOLE POST-TINTURA

After application of Cuticle Sealer Cream gentle shampoo and massage into hair as usual | Dopo l'applicazione di Cuticle Sealer Cream, procedere con lo shampoo delicato e massaggiare sui capelli come di consueto

Tip
HOME MAINTENANCE |
TRATTAMENTO DOMESTICO
1x a week | 1 volta a settimana



3
CUTICLE SEALER ANTI-ODOR MASK pH 3.5
MASCHERA PER CAPELLI ANTI-ODORE CHIUDI CUTICOLE POST-TINTURA

Unique SINODOR formula neutralises and eliminates the unpleasant odors | Lo speciale ingrediente "SINODOR" forma dei reticolati molecolari con i componenti volatili degli odori sgradevoli dovuti ai trattamenti neutralizzandoli ed eliminandoli.

USAGE | UTILIZZO

Coloring: after shampooing as a mask for 5 min. | Colorazione: dopo lo shampoo applicare come una maschera e lasciare in posa 5 minuti

PROFESSIONAL
IMPERITY
MILANO